

Bringing Care Experience to Social Work Capacity Building

Training Toolkit : Presentation for Capacity Building of Social Workforce

Global Social Services Workforce Alliance, Miracle Foundation India and Child Frontiers



Social Workers



Introductions

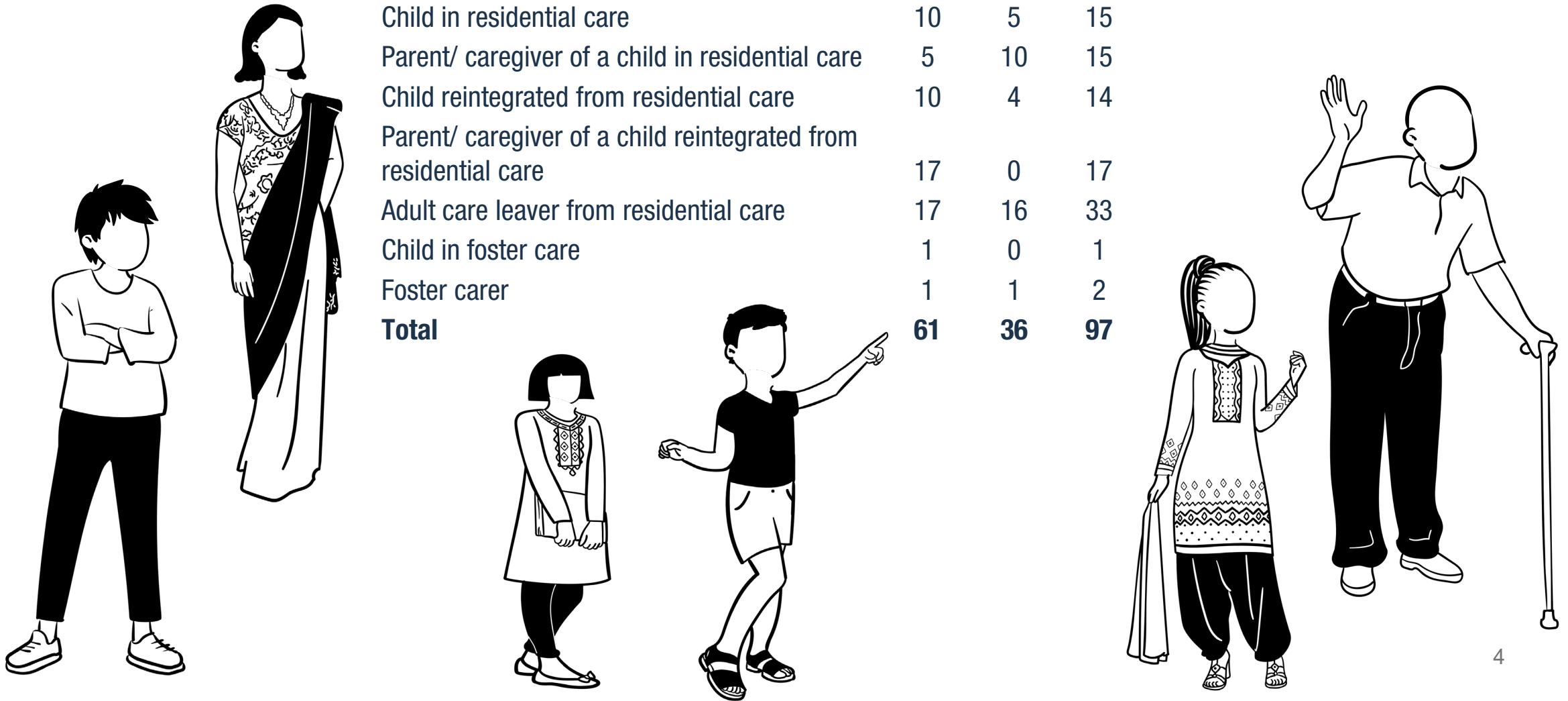
Please share with us all:

- Your name
- A happy memory from your childhood

We all have an important role to play in creating happy memories for the children and young people we work with

Whose Voices Are We Hearing? We Spoke To...

	Female	Male	Total
Child in residential care	10	5	15
Parent/ caregiver of a child in residential care	5	10	15
Child reintegrated from residential care	10	4	14
Parent/ caregiver of a child reintegrated from residential care	17	0	17
Adult care leaver from residential care	17	16	33
Child in foster care	1	0	1
Foster carer	1	1	2
Total	61	36	97



Objectives

By the end of this training, social workers and social work managers will:

1. Have heard the voices of care-experienced individuals.
2. Understand what these care-experienced individuals think:
 - Social workers should do to support them
 - About how social workers should behave and the skills they might need to support them.
3. Commit to taking action to better support care-experienced individuals (according to their needs and wishes).
4. Have contributed ideas about the wider changes that need to happen (e.g. to policies, resources allocations, job descriptions etc.) to better support care-experienced individuals.

Training Sessions

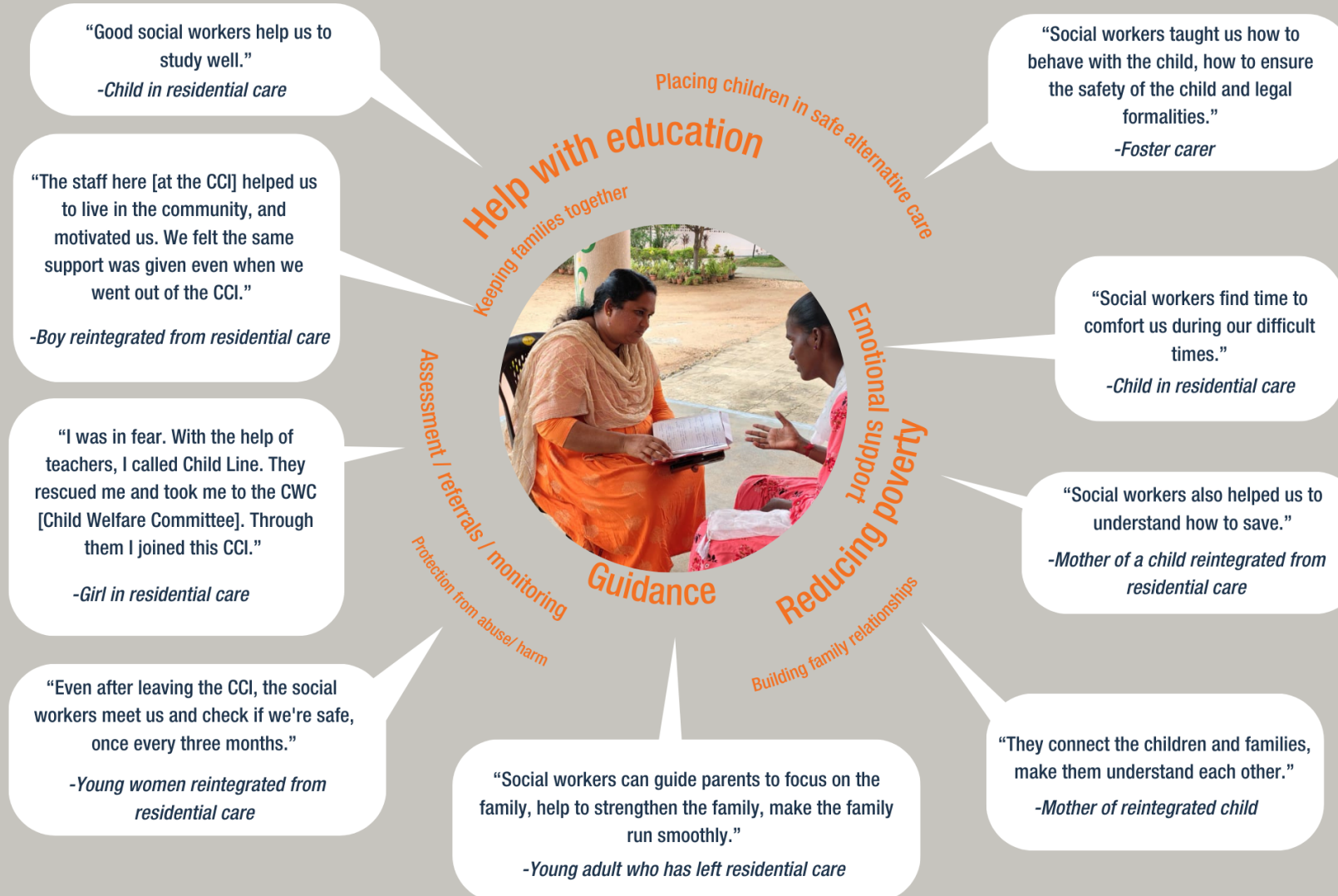
1. Welcome and introductions
2. How should social workers help me and my family?
3. What skills should a social worker possess?
4. Feedback

How Can Social Workers Help Me And My Family? - 1





How can social workers help me and my family ?



How Can Social Workers Help Me And My Family? - 2



Vijayalakshmi's Case Study

1. What could social workers do to better support Vijayalakshmi at different points in her life? Think about the different points in her life:
 - Before she entered the CCI,
 - In the CCI,
 - After leaving the CCI etc.
2. What supports do social workers need to better support Vijayalakshmi? Think about, for example:
 - What their organisations could do,
 - The training they might need,
 - Policy reforms etc.

What Skills Should A Social Worker Possess?



What makes a good social worker?



Help And Hinder And Wrap-up



Help and Hinder

- What helps social workers to fulfil the roles and behave in a way that care-experienced people want them to fulfil?
- What challenges do social workers face in fulfilling these roles/ behaving in this way?

Types of Solution

- Changes that they can make as individuals
- Changes that should be made by their organisation
- Changes at a higher level – such as to policies

Feedback From Participants

Introductions

How should social workers help me and my family?

- Bring your child to life
- Video
- Word cloud
- Group work

What skills should a social worker possess?

- Video?
- Word cloud?
- Individual reflection

Help and hinder and finding solutions

- Group discussion

**Care-experienced individuals
thank you for your time and
participation**



Bringing Care Experience to Social Work Capacity Building

Training Toolkit : Presentation for Capacity Building of Social Workforce

Global Social Services Workforce Alliance, Miracle Foundation India and Child Frontiers

Social Work Managers



Introductions

Please share with us all:

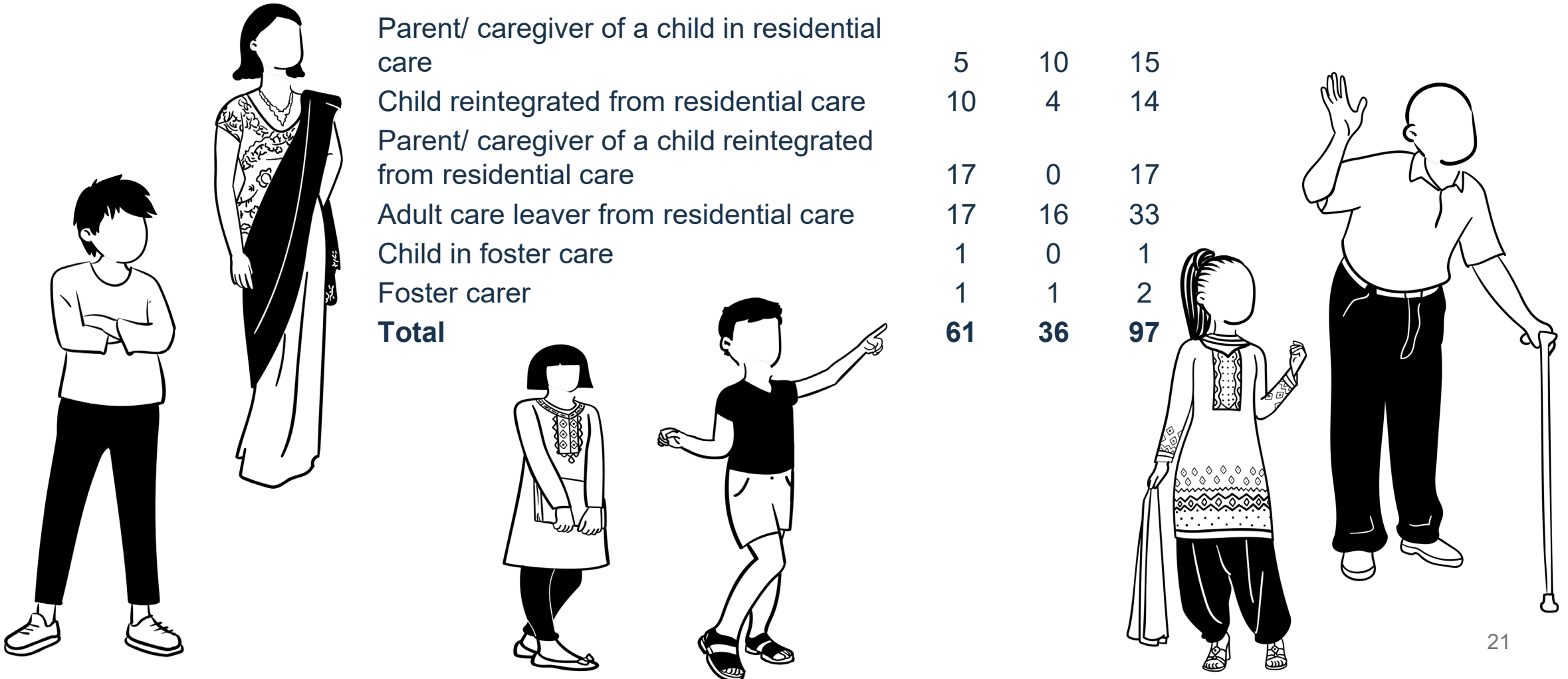
- Your name
- A happy memory from your childhood

We all have an important role to play in creating happy memories for the children and young people we work with

Whose Voices Are We Hearing? We Spoke To...

Child in residential care
Parent/ caregiver of a child in residential care
Child reintegrated from residential care
Parent/ caregiver of a child reintegrated from residential care
Adult care leaver from residential care
Child in foster care
Foster carer
Total

Female	Male	Total
10	5	15
5	10	15
10	4	14
17	0	17
17	16	33
1	0	1
1	1	2
61	36	97



Objectives

By the end of this training, social workers and social work managers will:

1. Have heard the voices of care-experienced individuals.
2. Understand what these care-experienced individuals think:
 - Social workers should do to support them
 - About how social workers should behave and the skills they might need to support them.
3. Commit to taking action to better support care-experienced individuals (according to their needs and wishes).
4. Have contributed ideas about the wider changes that need to happen (e.g. to policies, resources allocations, job descriptions etc.) to better support care-experienced individuals .

Training Sessions

1. Welcome and introductions
2. What skills should a social worker possess?
3. What's the role of social workers in care reform?
4. Wrap-up and actions
5. Feedback

What Skills Should a Social Worker Possess?



Reflect On:

- What are your strengths in enabling social workers to support care experienced individuals?
- What are your weaknesses in enabling social workers to support care experienced individuals?

What makes a good social worker?

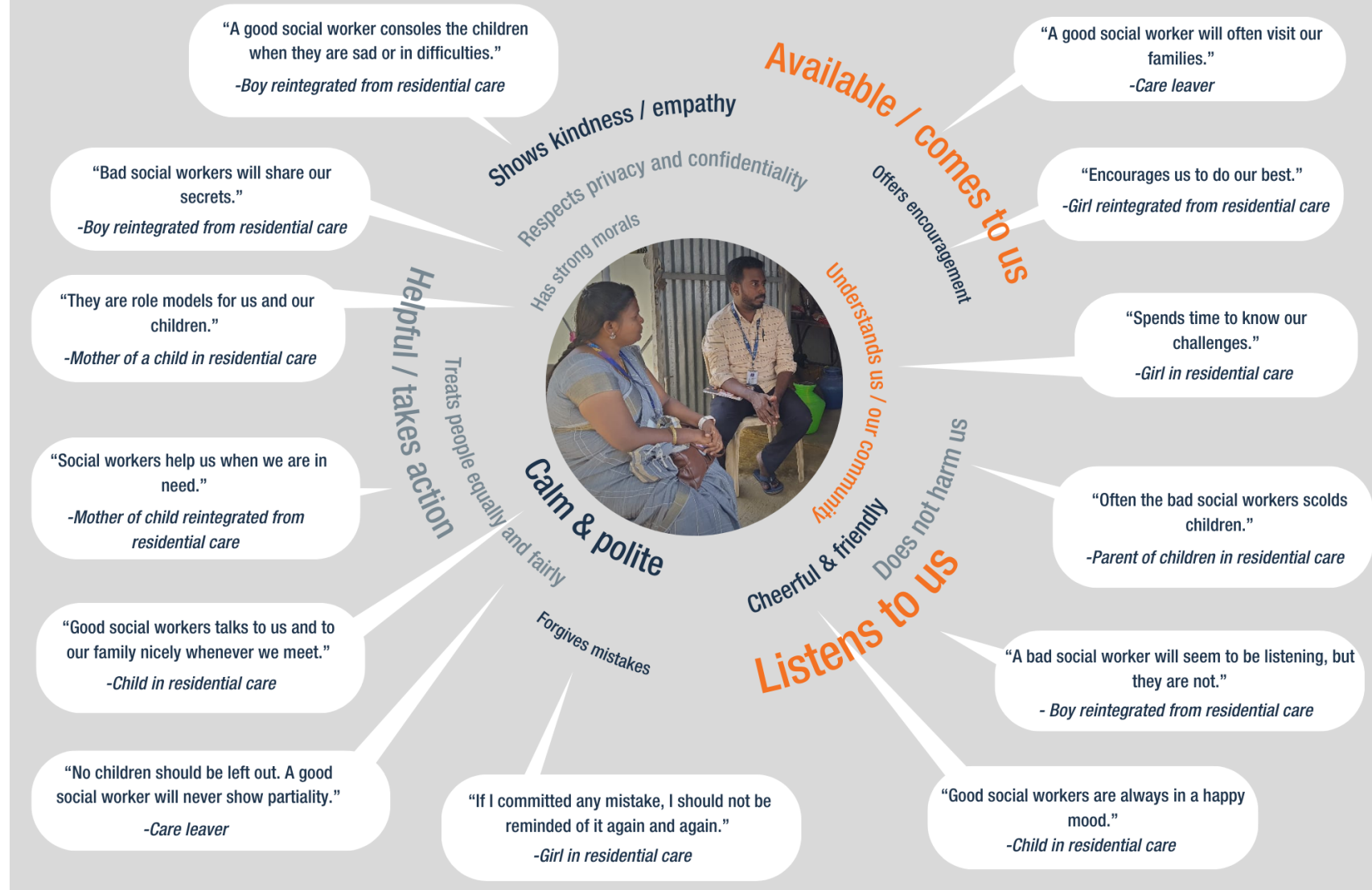


Photo Credit: Miracle Foundation India

Group Work

Barrier to being
a good social
worker

Barrier to being
a good social
worker

Barrier to being
a good social
worker

Barrier to being
a good social
worker

Barrier to being
a good social
worker

Group Work



The Role of Social Workers In Care Reform



The Care System Is.....

...“ the legal and policy framework, structures and resources that prevent family separation, support families to care for children well, and determine and deliver alternative care” (UNICEF ESARO, 2022).

None of us, or our organisations can do this alone!

The Care System Includes

- Policies and guidance on care
- Coordination mechanisms so that we can work together more easily
- Training social workers on care issues
- Improving decision making about care
- Providing services – such as foster care or support to families
- Monitoring and regulation of these services
- Changing harmful social norms
- Community support to vulnerable children and families
- Increasing the resources allocated to improving children's care

Vijayalakshmi's Case Study

1. What could social workers do to better support Vijayalakshmi at different points in her life? Think about the different points in her life:
 - Before she entered the CCI,
 - In the CCI,
 - After leaving the CCI

How Can The Care System Support Vijayalakshmi?

Group 1

- Policies and guidance on care ?
- Coordination mechanisms so that we can work together more easily ?
- Training social workers on care issues ?
- Decision making about care ?

Group 2

- Services – such as foster care or support to families?
- Monitoring and regulation of these services ?
- Changing harmful social norms ?
- Community support to vulnerable children and families?
- Increasing the resources allocated to improving children's care?

Feedback From Participants

Introductions

What skills should a social worker possess?

- Video?
- Word cloud?
- Group work using the wall

The role of social workers in care reform

- Explanation of the care system
- Exercise on the care system in India
- Discussion on Vijayalakshmi's case study
- Wrap-up

Care-experienced individuals
thank you for your time and
participation

